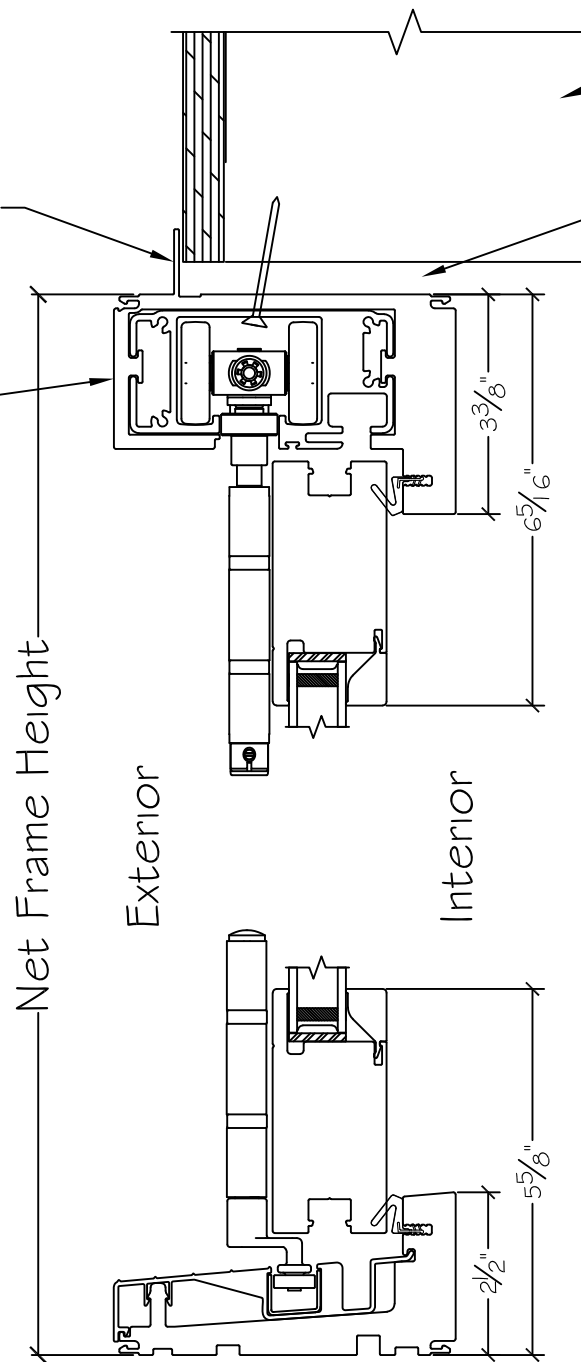


Nail Fin
@ 1" or 1 3/8" set back

Header as required by
engineer*

Allow 1/2" for Rough Opening

Head jamb
crowned per
installation
instructions



Critical

*Header Notes:

- Add 7 lbs per square foot of door opening to header load requirements.
- Header cannot deflect more than 1/4" over span.
- Solid header must be directly above door for proper anchoring and load requirement.

Notice: This document contains information proprietary to and is protected by copyright of Win-Dor Inc. and shall not be copied, disclosed to others, or used for any purpose other than that for which it is given, without the written permission of Win-Dor Inc.



450 Delta Ave
Brea, Ca 92821
(714) 385-1202

Project:

File name: 3750 - Folding Door - Vertical Section View with Header Load Requirements

Date: 20180329

Notes:

Layout: 3750 Folding Door Vertical Section View

Drawn by: J Johnson