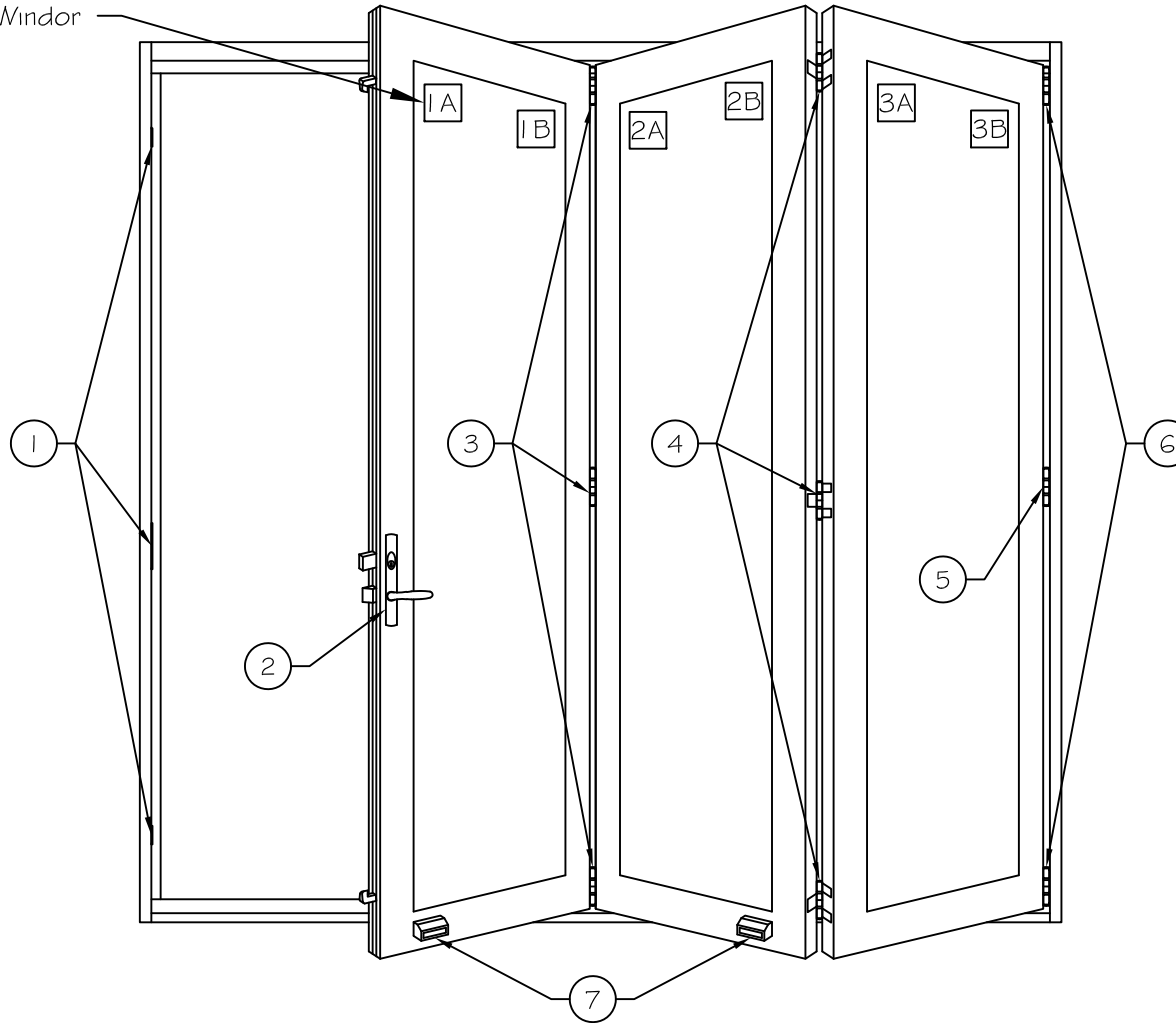


\*Panels labeled at Windor



\*Door as viewed from the exterior

Folding Door Parts

| Qty. | Description  | Qty. | Description    |
|------|--|------|----------------|
| 1    | Plates and Keepers   | 7    | Centor Magnets |
| 2    | Hardware Set   |      |                |
| 3    | E3 CICS Intermediate Carner Set                            |      |                |
| 4    | E3 HHSS Offset Hinge Set with Handle                       |      |                |
| 5    | E3 WPS Middle Wall Pivot (used with doors over 90" Height) |      |                |
| 6    | E3 CPS Pivot Set   |      |                |

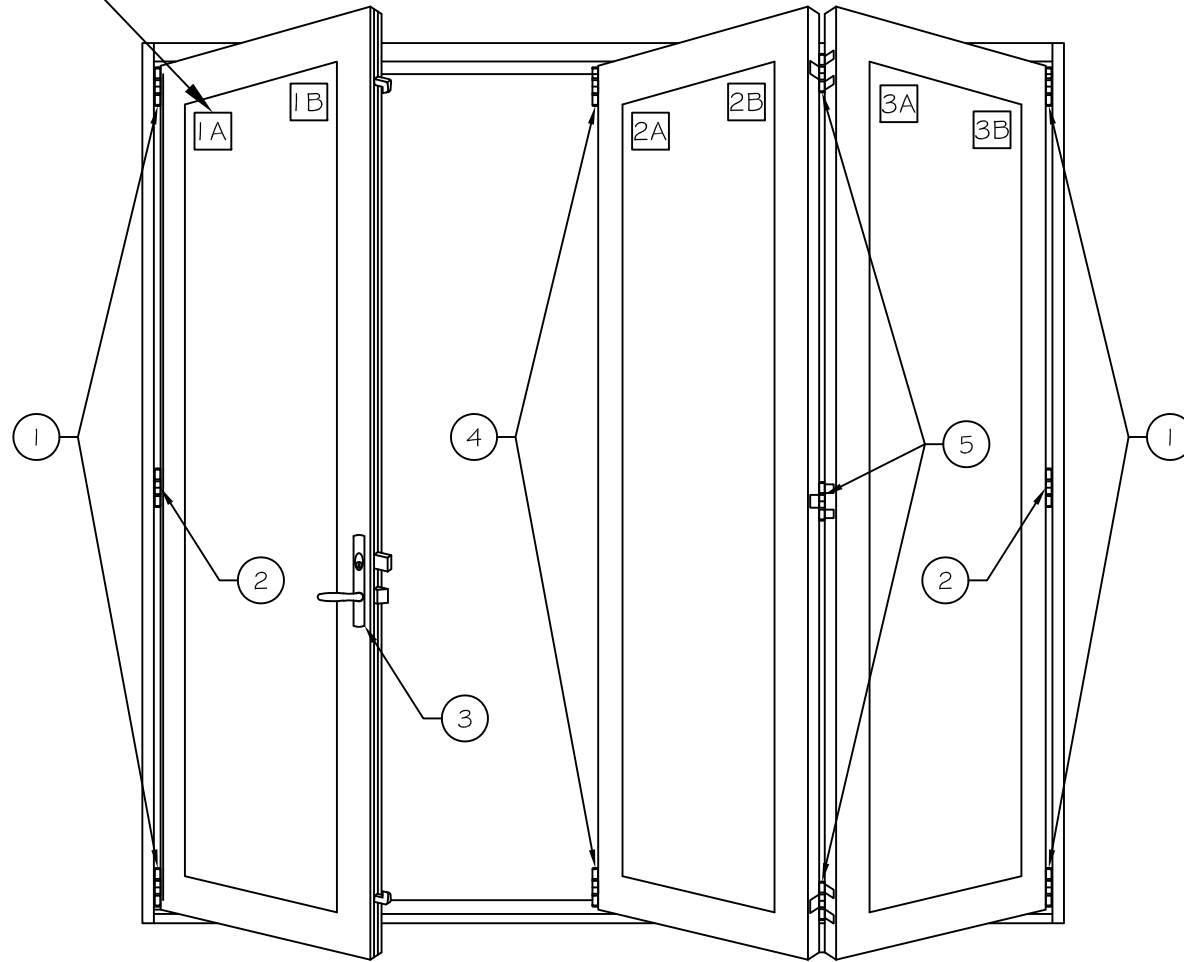
|          |   |                     |
|----------|---|---------------------|
| Project: | File name: 3750 Folding Door Parts - Doors 6'-8' Height | Date: 20190731      |
| Notes:   | Layout: 3.0.3   | Drawn by: J Johnson |

Notice: This document contains information proprietary to and is protected by copyright of Win-Dor Inc. and shall not be copied, disclosed to others, or used for any purpose other than that for which it is given, without the written permission of Win-Dor Inc.



450 Delta Ave  
Brea, Ca 92821  
(714) 385-1202

\*Panels labeled at Windor



\*Door as viewed from the exterior

Folding Door Parts

| Qty. | Description | Qty.   | Description |
|------|-------------|--|-------------|
| 1    | 2           | E3 CPS Pivot Set   |             |
| 2    | 2           | E3 WPS Middle Wall Pivot (used with doors over 90" Height) |             |
| 3    | 1           | Hardware Set   |             |
| 4    | 1           | E3 CLCS Left Carrier Set                                   |             |
| 5    | 1           | E3 HSS Flat Hinge Set with Handle                          |             |
|      |             |  |             |

Project:

File name: 3750 Folding Door Parts - Doors 6'-8' Height

Date: 20190731

Notes:

Layout: 3.1.2

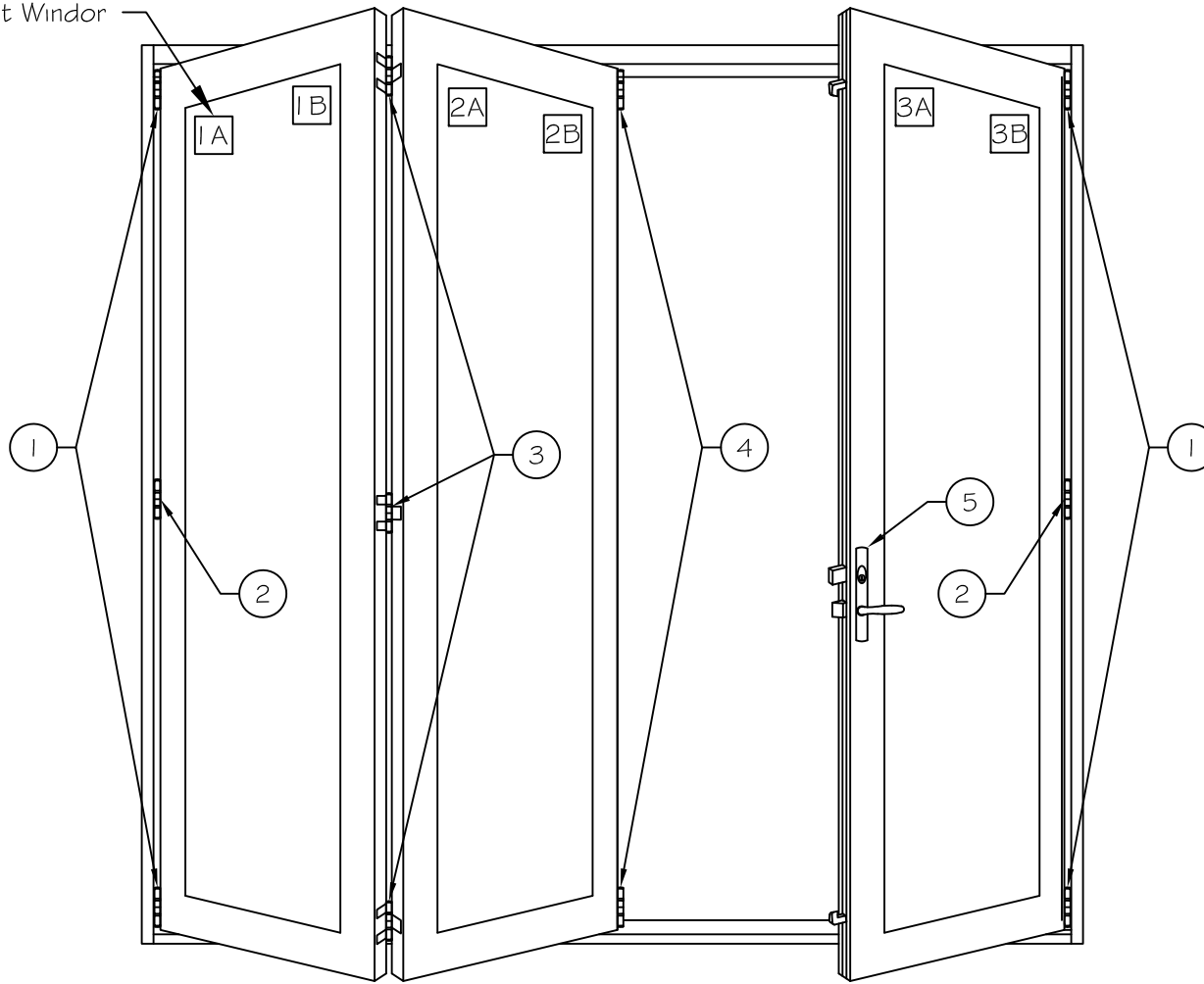
Drawn by: J Johnson

Notice: This document contains information proprietary to and is protected by copyright of Win-Dor Inc. and shall not be copied, disclosed to others, or used for any purpose other than that for which it is given, without the written permission of Win-Dor Inc.



450 Delta Ave  
Brea, Ca 92821  
(714) 385-1202

\*Panels labeled at Windor



\*Door as viewed from the exterior

Folding Door Parts

| Qty. | Description | Qty.   | Description |
|------|-------------|--|-------------|
| 1    | 2           | E3 CPS Pivot Set   |             |
| 2    | 2           | E3 WPS Middle Wall Pivot (used with doors over 90" Height) |             |
| 3    | 1           | E3 HSS Flat Hinge Set with Handle                          |             |
| 4    | 1           | E3 CRCS Right Carrier Set                                  |             |
| 5    | 1           | Hardware Set   |             |
|      |             |  |             |
|      |             |  |             |

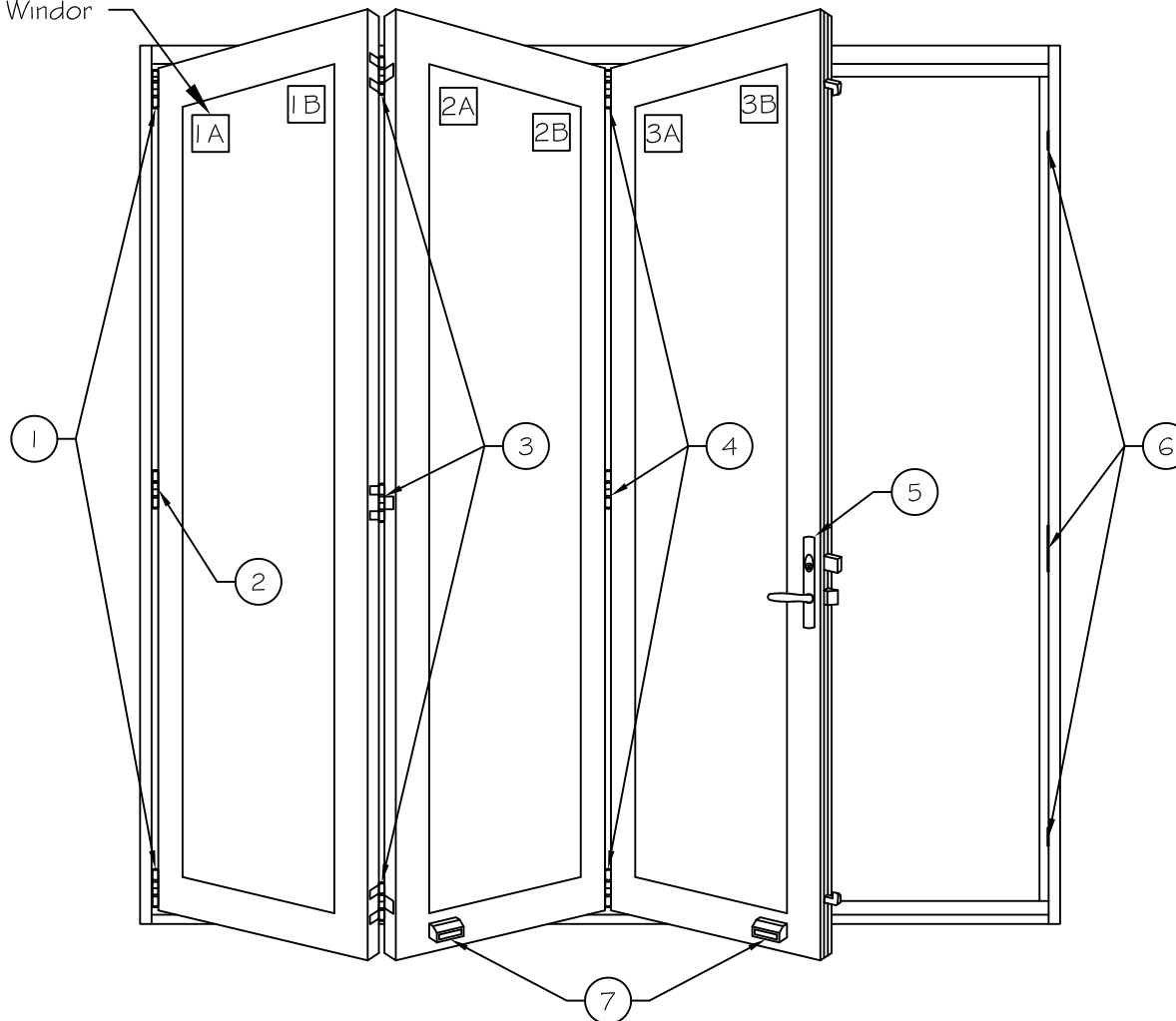
|          |   |                     |
|----------|---|---------------------|
| Project: | File name: 3750 Folding Door Parts - Doors 6'-8' Height | Date: 20190731      |
| Notes:   | Layout: 3.2.1   | Drawn by: J Johnson |

450 Delta Ave  
 Brea, Ca 92821  
 (714) 385-1202



Notice: This document contains information proprietary to and is protected by copyright of Win-Dor Inc. and shall not be copied, disclosed to others, or used for any purpose other than that for which it is given, without the written permission of Win-Dor Inc.

\*Panels labeled at Windor



\*Door as viewed from the exterior

Folding Door Parts

| Qty. | Description  | Qty. | Description    |
|------|--|------|----------------|
| 1    | E3 CPS Pivot Set   | 7    | Centor Magnets |
| 2    | E3 WPS Middle Wall Pivot (used with doors over 90" Height) |      |                |
| 3    | E3 HHSS Offset Hinge Set with Handle                       |      |                |
| 4    | E3 CICS Intermediate Carrier Set                           |      |                |
| 5    | Hardware Set   |      |                |
| 6    | Plates and Keepers   |      |                |

|          |   |                     |
|----------|---|---------------------|
| Project: | File name: 3750 Folding Door Parts - Doors 6'-8' Height | Date: 20190731      |
| Notes:   | Layout: 3.3.0   | Drawn by: J Johnson |

450 Delta Ave  
Brea, Ca 92821  
(714) 385-1202



Notice: This document contains information proprietary to and is protected by copyright of Win-Dor Inc. and shall not be copied, disclosed to others, or used for any purpose other than that for which it is given, without the written permission of Win-Dor Inc.