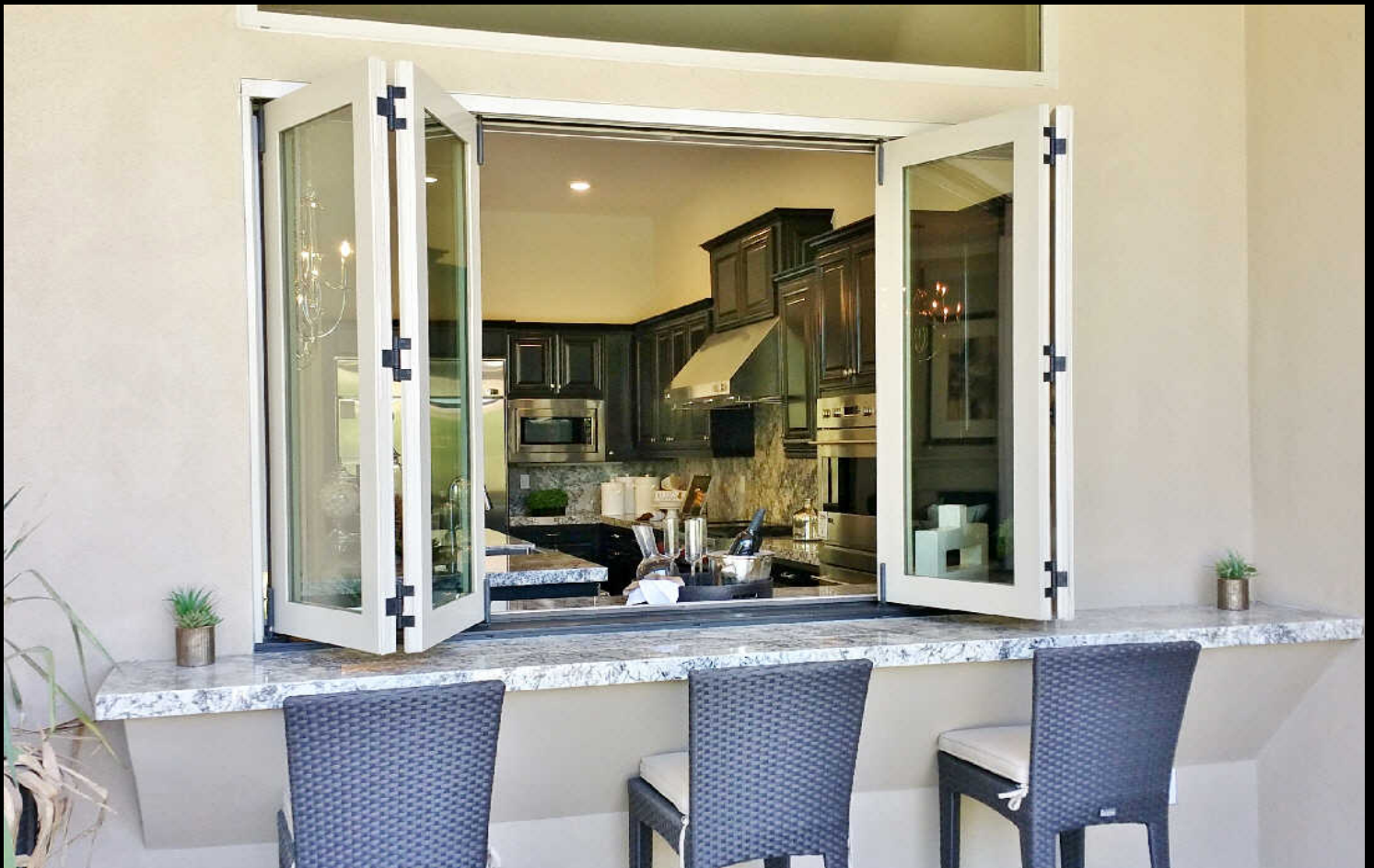


# WINDOR® SYSTEMS

*For the Name and the Products You Should Trust!*



# 2750 Bi-Folding Window System



## ■ Features and Benefits

- Vinyl Frame with aluminum reinforcement
- Foam backed seal on main frame
- Contemporary style vinyl sash
- Welded sash corners
- Dual interlocking weather seal on sash for superior air and thermal performance
- Centor™ E3 hardware system in stainless and dark powder coat finishes
- Stainless multipoint locking hardware
- Internal Multipoint shoot bolt system

## ■ Glass Options

- Cardinal™ 366® LoE Dual Glaze tempered with warm edge spacer system
- Clear, obscure, and custom glass is available

## ■ Hardware

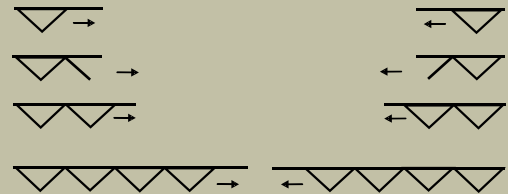
- Hardware Colors; White, Black powder coat, and Brushed Chrome

## ■ Grids

- SDL (Simulated Divided Lite)
- Flat (Colonial)
- Sculptured (Continental)

## ■ Sizes

- New Construction / Replacement
- Custom applications



Drawings show out-swing operation



Win-Dor is a proud member of the following



The National  
Fenestration  
Rating  
Council



American  
Architectural  
Manufacturer  
Association

[www.windorsystems.com](http://www.windorsystems.com)